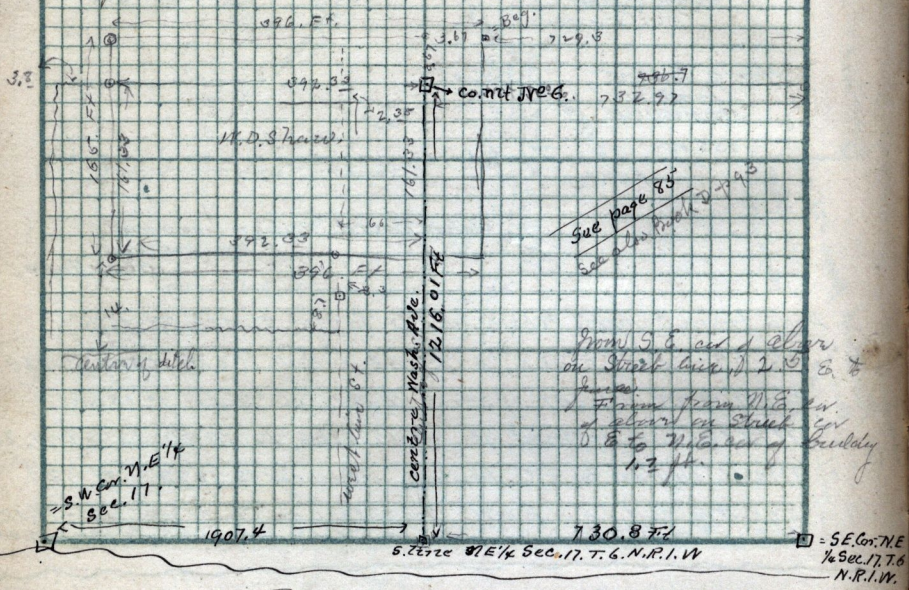


Copy of deed from Rasmus Christopherson to

Wm D. Shaw, dated Jan'y 5 - 1886. Q-398.

Part of the N.E 1/4 of Sec 17, T.6-N.R.1-West, Reg. at a point 18.48 ch N. ~~11.05~~ 11.05 ch W. from S.E. cor. of said Quar Sec. Thence West 6.00 ch, S. 7.00 ch, E 6.00 ch N 25° ch to bef. 1.5° W.



Scale: Richmont, Cache Co. Chains per inch.

- ✓ N^o 15. Main & 4th West. 1344.86 ft from center Co. road and 1549.12 ft - N of center field St. (S.W. 52.15 ft to fence post. N.W. 61.5 fence post taking cor. N.E. 45.33 Bx Elder tree on cor. S.E. 44.62 poplars E of cor.

U.S. patent to Iars C. Johnson of cache Co. dated Sept. 30 - 1882 - S.E 1/4 of N.W 1/4 and N.E 1/4 of S.W 1/4 of Sec 35 T-14-N.R.1-E. W-191